

# BTEC ART AND DESIGN BRIDGING WORK

---

The bridging work **MUST** be completed for each of your courses by the time you start your course.

Your work will be assessed in September.

Anyone not completing the work or producing such poor quality will be re-interviewed about their place on the course.

The aims are for you to understand if you like the course and for you to be ready to start learning at post 16 level.

## **SPECIFICATION –**

### **Edexcel BTEC Level 3 Diploma and Subsidiary Diploma in Art and Design**

BTEC Level 3 Diploma or Subsidiary course is made up of six or twelve units being studied over the course of two years; five core units and up to seven optional units that are chosen by the student.  
Core Units:

- 1 Visual Recording in Art and Design
- 2 Materials, Techniques, and Processes in Art and Design
- 3 Ideas and Concepts in Art and Design
- 4 Communication Through Art and Design
- 5 Contextual Influences in Art and Design

#### **Optional Units:**

Seven specialist units can include areas such as computer art, computer games design, fashion, photography, public art, sculpture, textiles, and architecture.

#### **ASSESSMENT**

You will need to buy some sketchbooks/folders for this course and these will be offered to you by the school later.

However you are expected to have an adequate pencil case with a range of drawing equipment at the beginning of the term.



## **The Seven Principles of Learning**

### **Remember you learn best when:-**

- 1. Use your initiative, have a go and clarify later; it's your ideas that matter.**
- 2. Take a risk and be creative.**
- 3. Talk about what you are learning and what you know.**
- 4. Work together to explore how you would solve a problem.**
- 5. Reflect on your needs and how you learn best in terms of interests, abilities and styles of learning. Make changes if necessary.**
- 6. Respond positively to feedback from your teachers and your peers.**
- 7. Take responsibility for your own**
- 8. learning.**



# YOUR TASKS

## **Welcome to the Yr. 12 BTEC Art and Design Course.**

The main purpose of any course in art and design is to develop your ability to appreciate the visual world, respond in a personal and creative way. The skills you will explore will be varied. Amongst them you will develop a working knowledge of materials, practices and technology within art and learn the skills to interpret and convey your ideas and feelings using art and design. You will improve your imaginative and creative powers and your experimental, analytical and documenting skills

The different disciplines include Illustration, Graphic Design, Photography, Fine Art, Printmaking, Fashion, Textiles and 3D Design. The course will also give students the opportunity to appreciate the work of other artists and designers and to learn about associated professional practice.

This bridging unit is to allow you to practice and build upon some of the core skills needed in BTEC Art and Design as well as show us just how creative you can be.

In your 1st unit you will study after the summer will be an Illustration/Graphic design project involving work from observation using a variety of media

In order to prepare for this work and future assignments it is important to develop your art and design using a variety of media.

It is also important to expand your knowledge of others artists work by visiting museums and galleries here in London or if you are away in those places as well.



**Your bridging work must include the following 2 assignments.**

**Assignment 1:**

Visit at least 1 museum or gallery to see a range of art work. List of places is provided but a little of your own research will help you find more detail about a particular show. While you are there you should record your visit with photos and pick up a few postcards of the artwork you have seen.

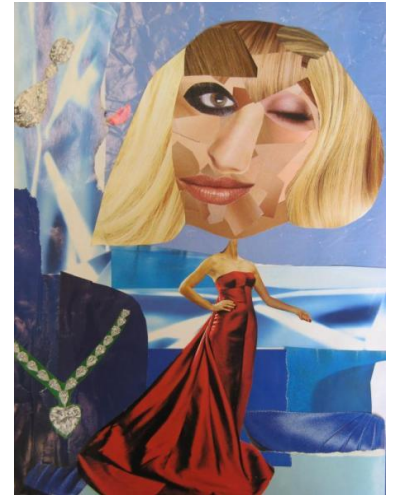
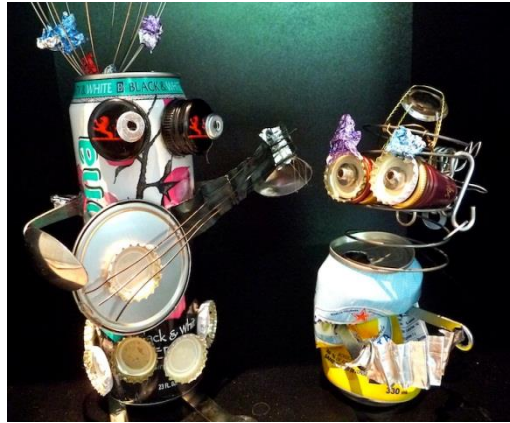
In response to the visit you must produce at least 1 piece of art that has been influenced or shaped by an artist on your visit. This can be in any media and is your opportunity to be really creative and show us what you can do independently.

For example, during a visit to Tate Modern you see the work of Max Ernst in the 'Surrealism and Beyond' (Room 2) which you find inspiring. You may read the information next to the art work and make a note of the title and any other information you can gather. You buy a postcard of his work if possible and later at home do some further research looking at the work again and trying to learn a little more about it. Then you start to come up with some ideas about what you could do in response.

This will include a page of small rough sketches or thumbnail designs on A4 or A3. Be creative here and try to show several different ideas.

Choose your best idea enlarge it to about A4 and develop it further. This is your final rough design.

Create your final piece using any media or materials. It could be a clay sculpture, a painting a large scale drawing a collage. What is important is that you relate it to the artist who inspired you and that you do it to a high standard.



## Assignment 2:

Observational drawing is an integral component of all Art courses. For many students, drawing is the core method of researching, investigating, developing and communicating ideas. It is usually advantageous to demonstrate competent, realistic observational drawing and painting skills to the examiner (particularly in the early stage of a project).

You will have a variety of Themes to select from below and must select a minimum of 3 though you can do more. We are looking for quality not quantity.

You may work using any drawing/painting media, Pencil, biro, felt pen, watercolour, pastels, charcoal etc.

You are strongly advised to look at an online tutorial, based on one of the themes below, which can really guide you through the process.

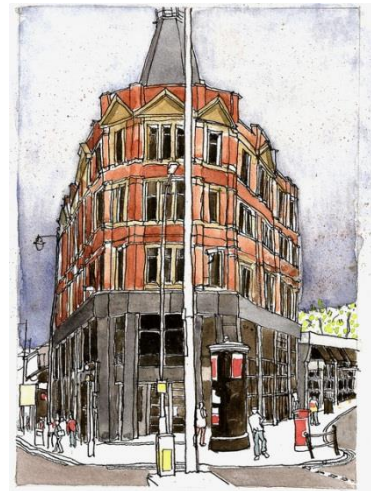
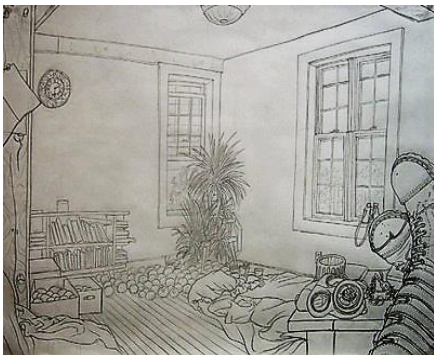
Each piece of work should use a different material.

**The work MUST be observational and cannot be copied from photographs unless they are your own.**

### Themes.

1. Portraiture: This can be self-portraits or of friends and family.
2. Interiors. A view of your own room or others within your house, or even the hotel room whilst on holiday.
3. A view from a window. Any observed window view, that ideally includes both part of the interior and view beyond.

4. Still life. Set up an interesting collection of objects at home and create a single light source. Draw/paint this accurately paying attention to light and shade and texture effects.
5. Landscape. Using one of your own photographs, or directly from observation make a detailed study of a landscape view. This can include parks, gardens, wooded views etc.
6. Cityscapes/architecture. For example Sit outside and make an accurate study of the back or front of your house, or whilst touring London or another city or town take photos and use these to create an interesting composition.



### **The Top 15 Art Galleries and Museums To Visit In London are listed below:**

Please check their web page for whats on, admission details, location times etc. Don't forget to take your camera to record your visit and collect any leaflets and postcards that are available. Though we are suggesting at least One visit try and take in 2 or 3.

#### **The British Museum**

The British Museum's collection of seven million objects representing the rich history of human cultures mirrors the city of London's global variety. In no other museum can the visitor see so clearly the history of what it is to be human.

**[www.britishmuseum.org](http://www.britishmuseum.org)**

#### **The Barbican**

Situated within the impressive Barbican Centre, the Barbican Art Gallery presents a mix of photography, fine art, design and architecture from leading designers and artists of the 20th and 21st centuries **[www.barbican.org.uk](http://www.barbican.org.uk)**

#### **Tate Britain**

The newly refurbished Tate Britain is the original of four Tate galleries around the country, Tate Modern, Tate Liverpool and Tate St. Ives being the others. Here the national collection of British art from the year 1500 to the present is displayed, encompassing such seminal figures as Thomas Gainsborough, William Hogarth, John Constable and William Blake. One of Britain's best-loved and most revered painters, J.M.W. Turner, has an entire wing of Tate Britain to himself.

**[www.tate.org.uk/britain](http://www.tate.org.uk/britain)**

#### **Tate Modern**

Situated adjacent to the new Globe Theatre on the South Bank, Tate Modern is the national repository for international modern art in the capital. The gallery, which is linked to St Paul's

Cathedral by the Millenium Bridge, was converted to it's present form by the Swiss architects Herzog & de Meuron from the former Bankside Power Station. [www.tate.org.uk](http://www.tate.org.uk)

### **The Courtauld Gallery**

The Courtauld Gallery is one of the finest small museums in the world. Its collection stretches from the early Renaissance into the 20th century and is particularly renowned for the unrivalled collection of Impressionist and Post-Impressionist paintings. [www.courtauld.ac.uk](http://www.courtauld.ac.uk)

### **Hayward Gallery**

Head to the South Bank for one of London's most interesting galleries. Unlike most galleries, The Hayward Gallery houses major temporary exhibitions of contemporary and historical works with no permanent exhibitions. More recently, the gallery has tended to show more contemporary works but in the past it has included works by old masters including Leonardo Da Vinci.

[www.southbankcentre.co.uk/venues/hayward-gallery](http://www.southbankcentre.co.uk/venues/hayward-gallery)

### **ICA Gallery**

An important gallery, the ICA (Institute of Contemporary Arts) is renowned for the quality of the works displayed there. Opened in 1948, the centre has maintained a reputation for it's diverse and avant garde approach. The gallery often features experimental, abstract and new media works and boasts a repertory cinema. [www.ica.org.uk](http://www.ica.org.uk)

### **Lisson Gallery**

Lisson Gallery was founded in 1967 by Nicholas Logsdail. It was one of a small number of pioneering galleries in the UK, Europe and the United States to champion a generation of artists who were transforming the way art was made and presented, focusing on the idea or concept behind an artwork over expressive or descriptive aims.

[www.lissongallery.com](http://www.lissongallery.com)

### **The National Gallery**

Situated on the north side of Trafalgar Square, the National Gallery has been the home for the National Collection of Art from the thirteenth to the twentieth century. All art after 1900 is kept in the Tate Modern on the South Bank. The gallery contains more than 2,300 paintings - all of which are owned by the British public [www.nationalgallery.org.uk](http://www.nationalgallery.org.uk)

### **The National Portrait Gallery**

From medieval to present time, the National Portrait Gallery houses over 10,000 portraits of famous men and women throughout British history from as early as Henry VII to the present Queen. Notable portraits include Henry VIII, William Shakespeare, Rudyard Kipling and William Ewart Gladstone.

[www.npg.org.uk](http://www.npg.org.uk)

### **Proud Galleries**

Over the last ten years Proud Galleries has become Europe's most popular privately funded photographic gallery, consistently receiving some of the best press coverage in the country. With a focus on photography reflecting popular culture, encompassing rock & roll, fashion, sporting moments and more, our shows are always exciting, cutting edge and sometimes controversial.

[proudonline.co.uk](http://proudonline.co.uk)

### **The Saatchi Gallery**

An impressive and unique venue, The Saatchi Gallery houses one of the most influential collections of contemporary art in London. The gallery displays works from an array of national and international sculptors, painters, photographers, and multimedia artists, many who have never before been seen in London. [www.saatchi-gallery.co.uk](http://www.saatchi-gallery.co.uk)

### **The Royal Academy of Arts**

Opened in 1768, the Royal Academy of Arts was Britain's first art school and today features regular displays of works by artists as revered as Rembrandt, Rubens and Monet as well as paintings, sculptures, drawings, prints, plaster casts and architecture from living artists. Each year the exhibitions attract more than a million people, so be prepared to queue!

[www.royalacademy.org.uk](http://www.royalacademy.org.uk)

### **Serpentine Gallery**

Situated in the beautiful surroundings of Kensington Gardens, overlooking Hyde Park, The Serpentine Gallery is home to some of the most stimulating and attractive examples of modern and contemporary art and architecture in London. A former classical tea pavilion, the Serpentine Gallery was founded in 1970 by the then Arts Council of Great Britain. [www.serpentinegallery.org](http://www.serpentinegallery.org)

### **White Cube**

The building houses a main, basement floor gallery which is a naturally lit, double-height space with a second gallery on street level providing 5000 ft<sup>2</sup> of exhibition space. White Cube, Mason's Yard continues with an international, high profile programme of exhibitions and was launched with an inaugural exhibition by Gabriel Orozco. <http://whitecube.com>

### **Whitechapel Gallery**

The Whitechapel Art Gallery was founded in 1901 to bring great art to the people of east London. Internationally acclaimed for its exhibitions of modern and contemporary art and its pioneering education and public events programmes, the Gallery has premiered international artists such as Pablo Picasso, Frida Kahlo, Jackson Pollock, Mark Rothko and Nan Goldin, and provided a showcase for Britain's most significant artists from Gilbert & George to Lucian Freud, Peter Doig to Mark Wallinger. [www.whitechapelgallery.org](http://www.whitechapelgallery.org)